



**TfL  
Craft Club**  
with Saatchi Gallery  
and RHS  
**Botanical  
Art**

## Hello and welcome back to TfL Craft Club

Spring has sprung here at Craft Club and nothing beats getting out and about for a walk. With so much to discover and enjoy on our doorstep there is no better time to explore London's blooms.

We've teamed up with our friends at Saatchi Gallery and the Royal Horticultural Society (RHS), who are presenting the **2022 RHS Botanical Art and Photography Show this April**. To celebrate, this edition of TfL Craft Club is an exploration of all things botanical.

Grab your pencils, paper, paints, crayons, cameras as we take a deeper dive into the wonderful flora which surrounds us. From parks to patios, gardens to greenhouses, balconies to baskets; let's get creative. Don't forget to share your wonderful creations with us @TfLCraftClub and @saatchigallery\_learning instagram

**The RHS Botanical Art & Photography Show will be on view from 9 to 29, April at Saatchi Gallery.**



# Discover botanical art

The 2022 RHS Botanical Art Show, on view at Saatchi Gallery from 9-29 of April, will feature short-listed botanical drawings and photographs by UK and international artists and photographers. A diverse range of subjects will be presented showcasing plants from the UK and across the globe. Native British trees and hedgerow plants will complement illustrations of beautiful garden flowers. Anatomical drawings showing the structure and form of some of our garden favourites, alongside explorations of many familiar fruits and flowers. To find out more visit the Saatchi Gallery website [here](#).

Share your drawings, paintings, or photographs of the botanics you can spot near you. Your subject could be anything, from a tulip in a garden, a pot of herbs from your local supermarket, to fungi growing in a local park, woods, or a house-plant in your living room. Share your artworks with us at @TfLCraftClub and @saatchigallery\_learning instagram pages.



Succulent



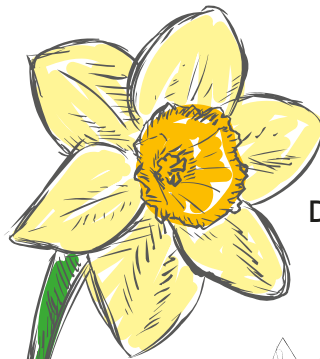
Dandelions



Sunflower



Mushrooms



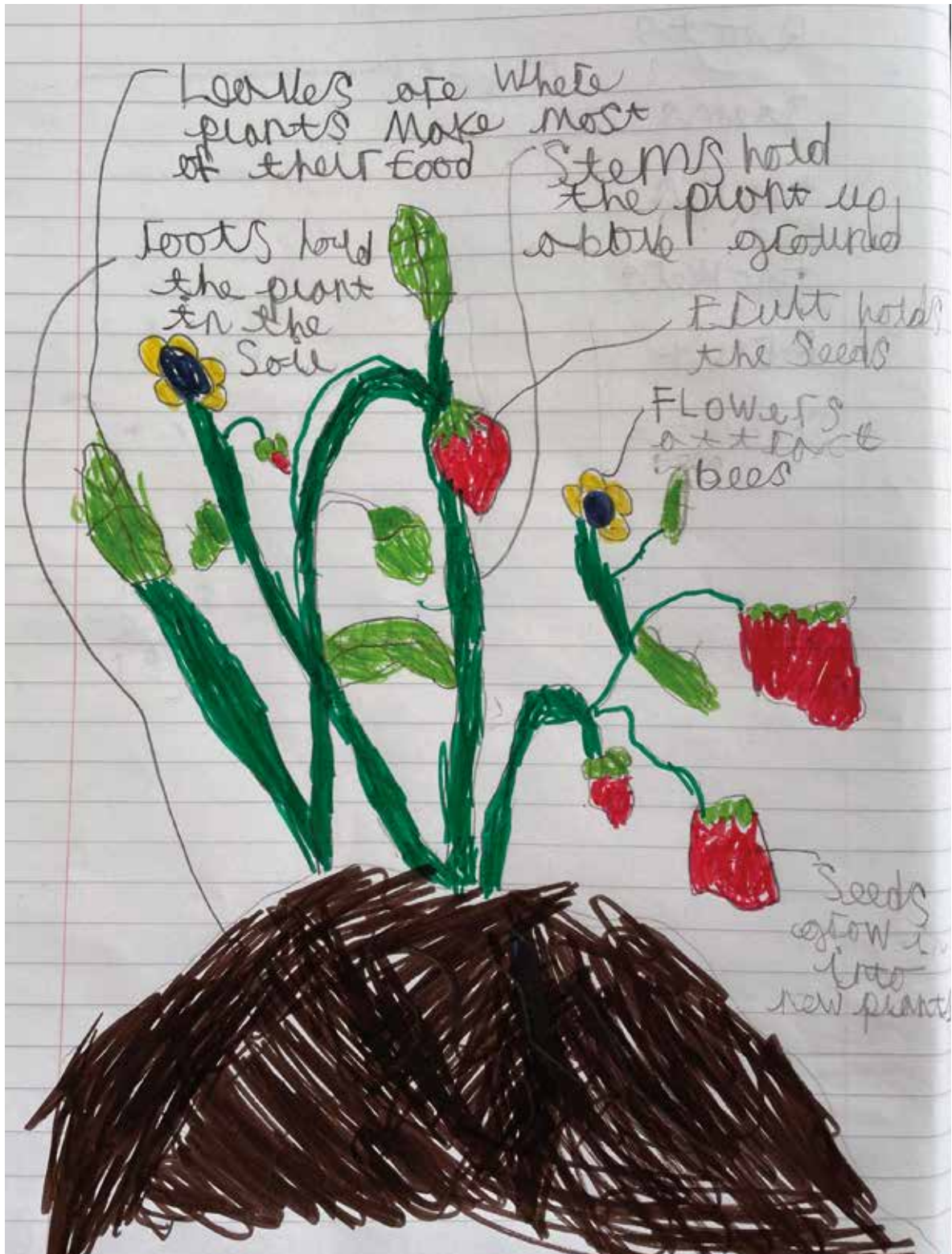
Daffodil



Cherry blossom

# Identify your subject

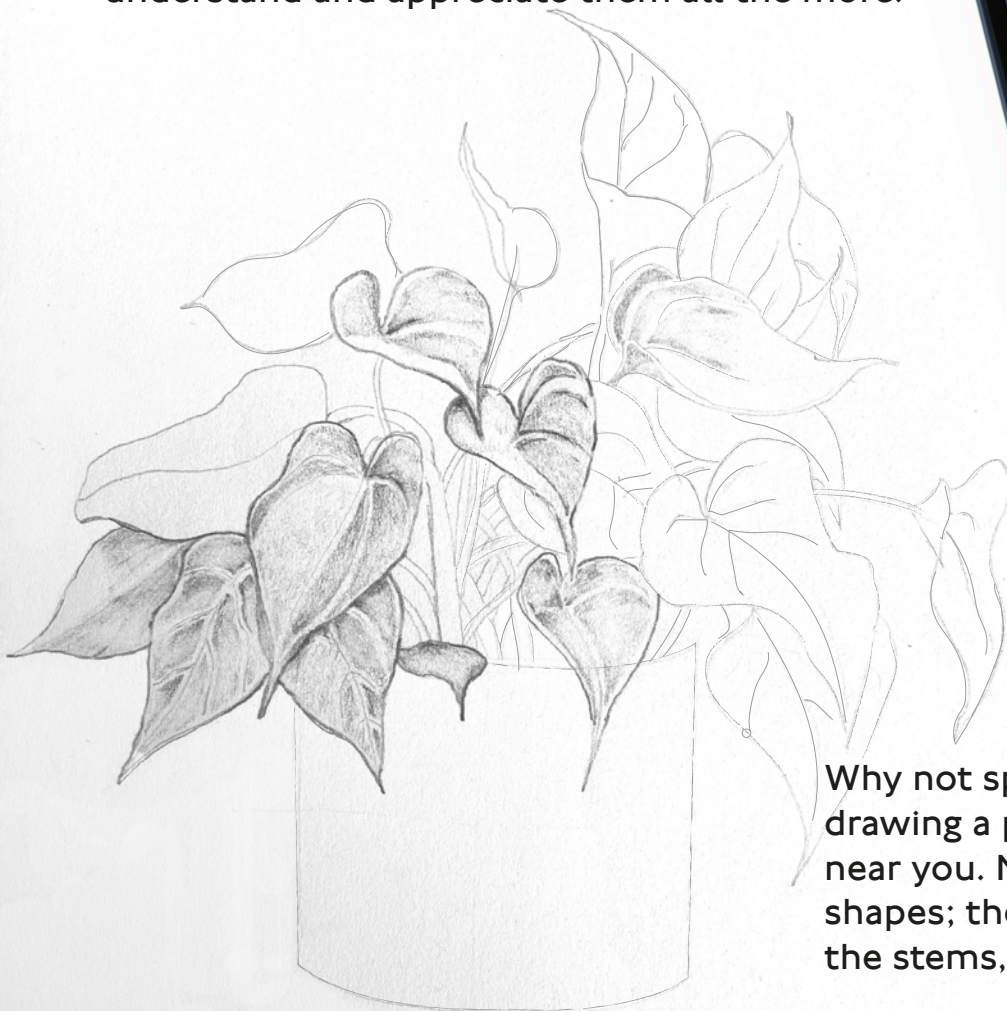
Now you have chosen your subject it's time to use your observation skills to label your artwork or photograph. You could research online to find out a bit more, or use you own observations to label the stem, petals, leaves, colours or any other striking features. Here's an example one of our Craft Clubbers made earlier.



## In Focus: Closer to nature



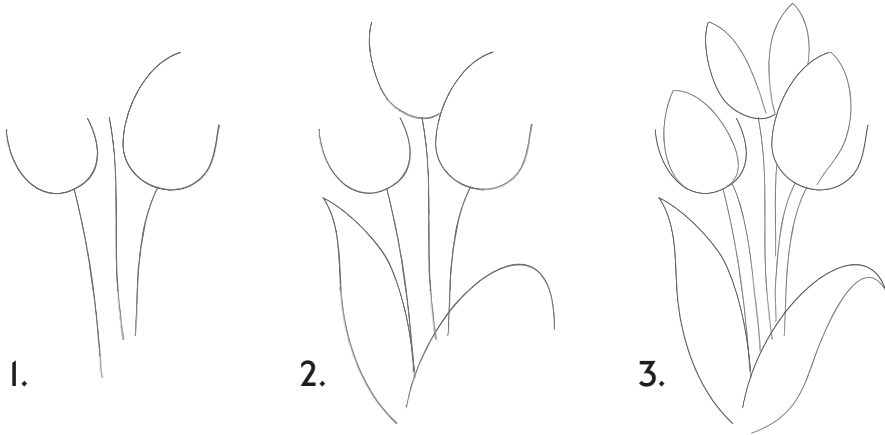
Drawing or photographing the things we see in nature can have a positive effect on our well-being and help us feel calm and joy. It brings us closer to nature and helps us understand and appreciate them all the more.



Why not spend a few moments drawing a plant or flower you see near you. Notice the colours, textures, shapes; the various parts of the plant, the stems, leaves, buds, or flowers.

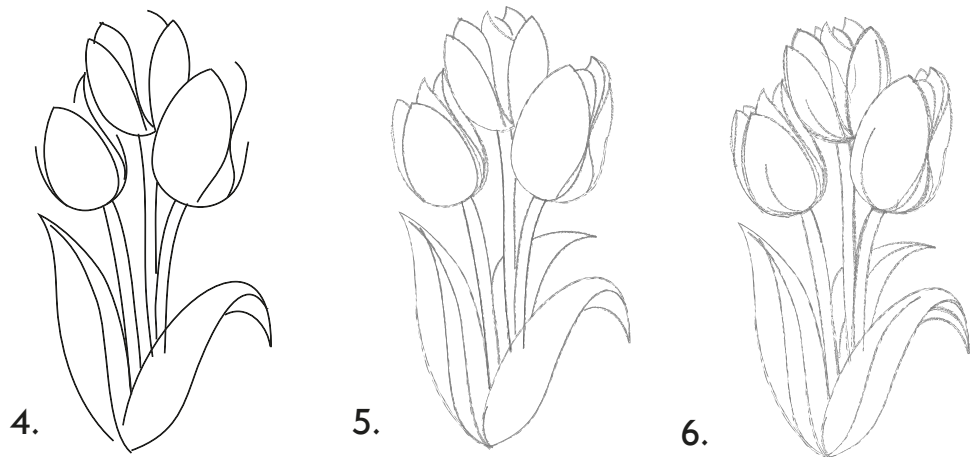
# How to draw tulips

Tulips can be seen dotted all over London throughout Spring. They come in many varieties with colours from yellow to red, pink to almost black. Have a go at drawing your own tulips, all you need is a pencil and a sheet of paper. Here's a guide to help you along.



The name 'Tulip' originated from the Persian word 'delband' meaning turban due to its shape

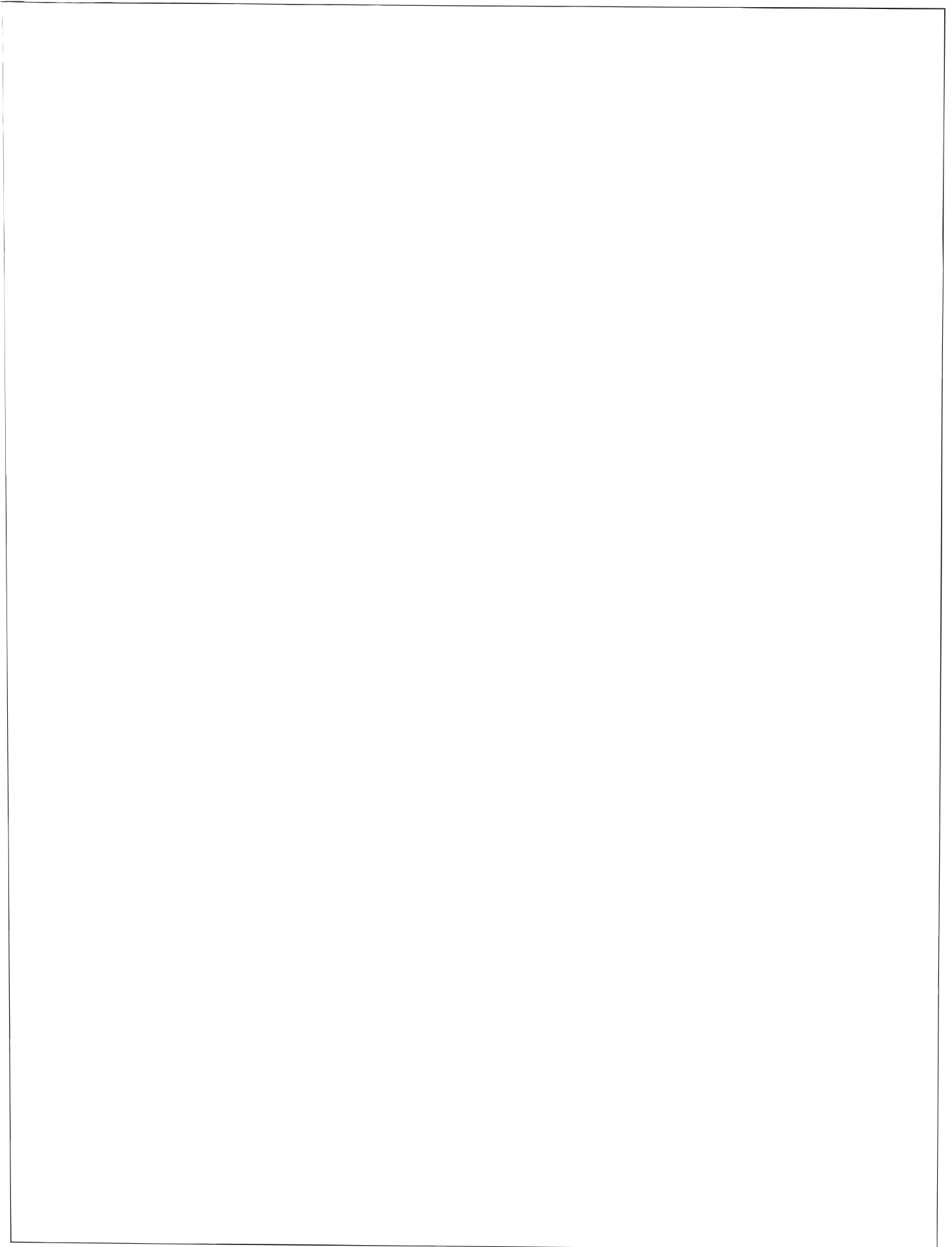
Red tulip flowers symbolize true love, while purple represents loyalty



There are around 75 wild species of tulip and 150 species in total with over 3000 varieties

# Draw your own tulips

Have a go at drawing your own tulips here, use the step-by-step guide to help you along.



Thank you to our friends at the Saatchi Gallery and RHS for joining us at Craft Club HQ to create this amazing kit. It's been great fun!

## SAATCHI GALLERY

### ABOUT SAATCHI GALLERY

Since 1985, Saatchi Gallery has provided an innovative platform for contemporary art. Exhibitions have presented works by largely unseen young artists, or by international artists whose work has been rarely or never exhibited in the UK. This approach has made the Gallery one of the most recognised names in contemporary art. Since moving to its current 70,000 square feet space in the Duke of York's Headquarters in Chelsea, London, the Gallery has welcomed over 10 million visitors. The Gallery hosts over 5,000 schools visits annually and has over 6 million followers on social media. In 2019 Saatchi Gallery became a charity, beginning a new chapter in its history.

For more information visit [saatchigallery.com](http://saatchigallery.com)

Saatchi Gallery,

Duke of York's HQ, King's Rd, Chelsea SW3 4RY

Saatchi Gallery Registered Charity No. 1182328



### ABOUT ROYAL HORTICULTURAL SOCIETY (RHS)

The Royal Horticultural Society, the world's leading gardening charity, was founded in 1804 by Sir Joseph Banks and John Wedgwood. Our vision is to enrich everyone's life through plants, and make the UK a greener and more beautiful place. This aspiration underpins all that we do, from inspirational gardens and shows, through our scientific research, to our education and community programmes such as Campaign for School Gardening and Britain in Bloom. We produce key publications, hold a world-class collection of horticultural books and botanical art, and sell the very best plants and gardening gifts. The RHS is fundraising £40m to transform our gardens outreach and education facilities, which includes redeveloping our flagship RHS Garden Wisley and growing RHS Garden Bridgewater, our fifth RHS garden which opened in 2021. The RHS is fundraising £40m to transform our gardens, outreach, and education facilities, which includes redeveloping our flagship RHS Garden Wisley and opening a new garden, RHS Garden Bridgewater, in 2021. We are solely funded by our members, visitors and supporters.

For more information visit: [rhs.org.uk](http://rhs.org.uk)

RHS Registered Charity No. 222879/SC038262

