

# ACTIVITY TRAIL



**Primary Schools and Families**

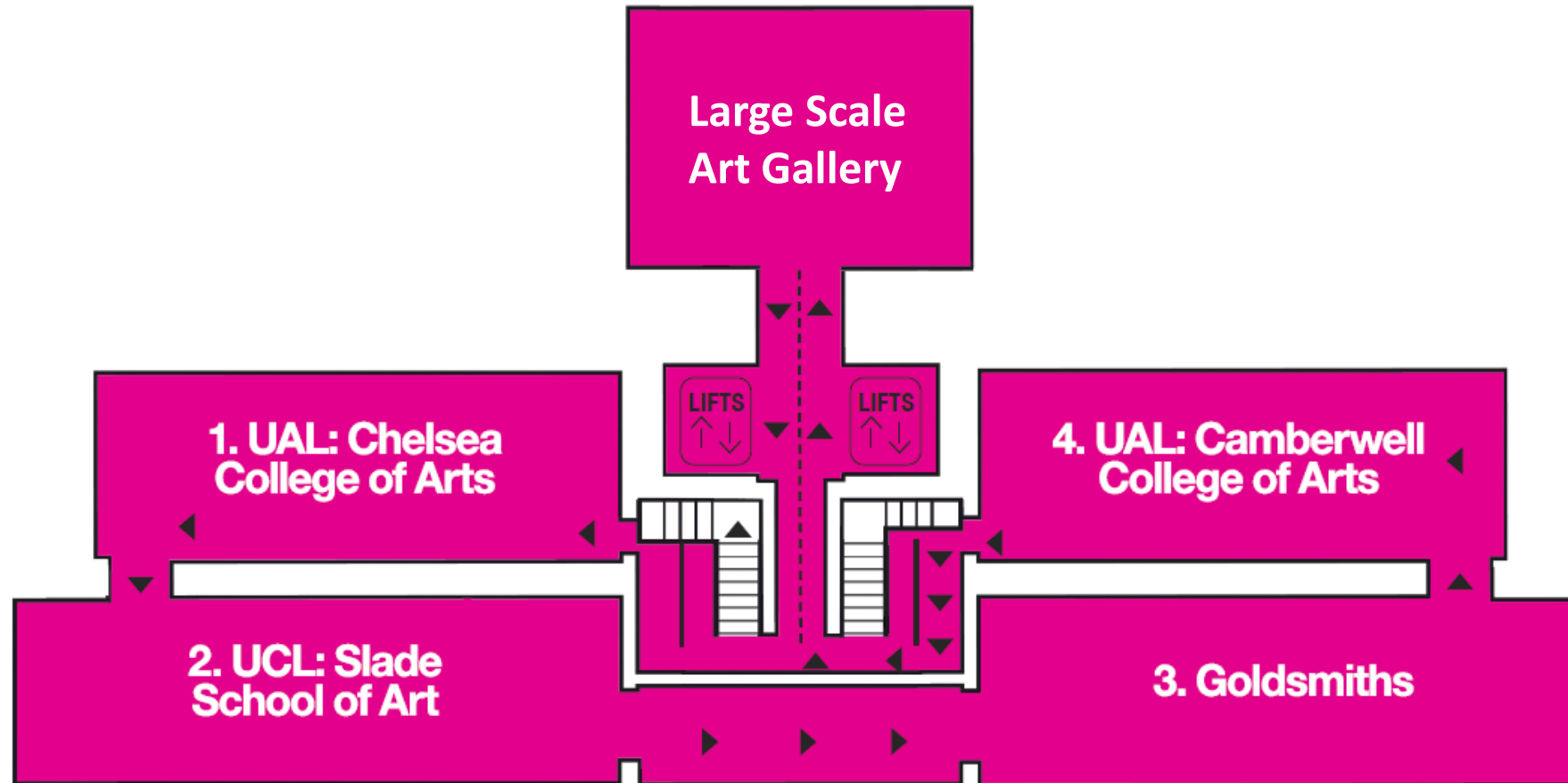
# **WELCOME TO LONDON GRADS NOW. 21**

**THIS PACK WILL HELP YOU DISCOVER MORE ABOUT THE  
ARTWORKS IN THE EXHIBITION**

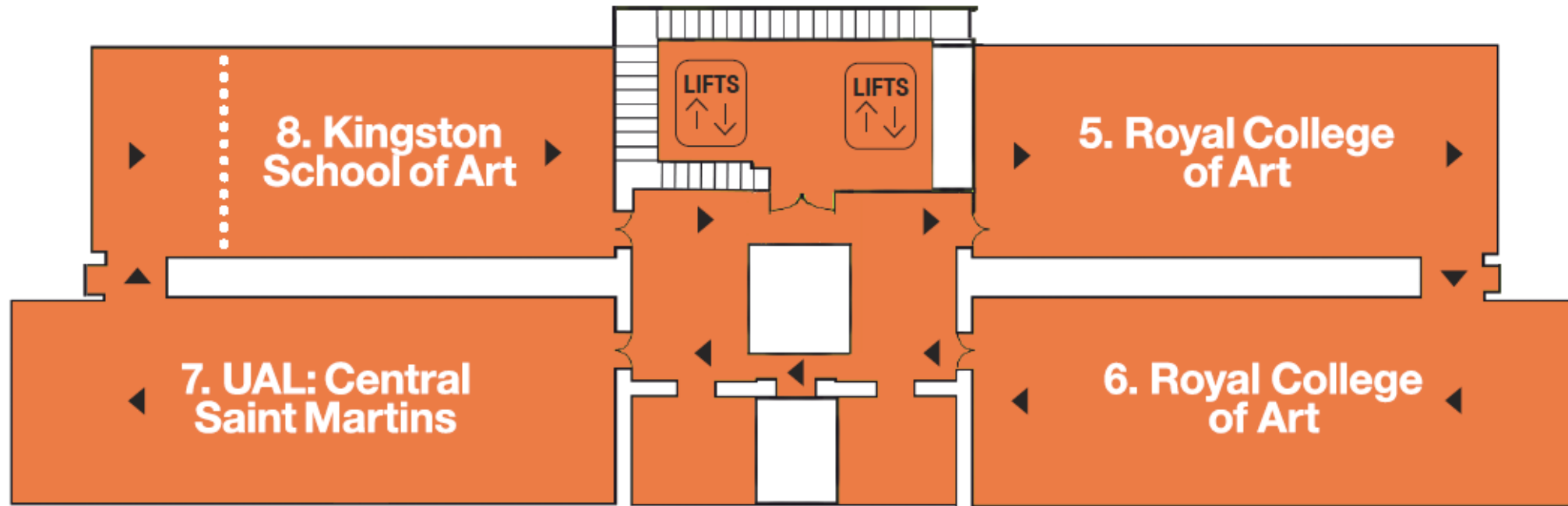


You will need a pencil!

# EXHIBITION MAP



# EXHIBITION MAP



# OTHER WAYS TO SAY HOW THE ART MAKES YOU FEEL

Use these words to help you describe how the art makes you feel!

The artwork is <b>GOOD</b>	The artwork is <b>BAD</b>
Excellent	Awful
Enjoyable	Boring
Beautiful	Nasty
Intriguing	Unpleasant

**Because it makes me feel....**

<b>Happy</b>	<b>Inspired</b>
Cheerful	Excited
Funny	Motivated

<b>Sad</b>	<b>Bored</b>
Gloomy	Tired
Miserable	Dull

**You can return to this page whenever you would like to talk about an artwork.**

# THE ARTISTS IN THIS EXHIBITION ARE ALL LONDON UNIVERSITY GRADUATES

---

The exhibition has all types of art including painting, drawing, photography and textiles.

What types of art do you like to make? Circle the examples or write your own in the box below!

Sculpture

Photography

Painting

Drawing

Collage

Printmaking



The artists are at the start of their career.

Below are some examples of jobs, can you work out which jobs involve art? Circle them with your pencil.

Art Teacher

Dentist

Vet

Interior Designer

Gallery Curator

Plumber



# GALLERY 1

Chelsea



This piece is called 'Female Champion'. Can you find it in the gallery?



What makes the woman look like a champion in this image?



(Hint - her pose)

---

---

---

---

Do you know any women who are champions? What have they done to deserve this title?



---

---

---

---



# GALLERY 2

Slade School of Fine Art

## TEXTILES

Textiles are one of the oldest art forms. Quilts and tapestries have been used to tell stories and myths throughout history.

There are many forms of textile art including:

- Knitting
- Sewing
- Weaving

What kind of textiles can you find in this gallery?



Can you find these textiles words in the wordsearch?

WOOL			COTTON			SEWING			STITCH		
KNIT			NEEDLE			QUILT			FELT		
S	W	S	D	J	N	N	H	G	K	I	M
Q	N	E	H	S	T	I	T	C	H	B	R
J	L	X	G	S	T	H	E	T	F	A	D
O	R	S	U	B	S	Q	B	L	D	J	J
N	O	T	T	O	C	L	G	I	R	Q	O
E	O	L	T	Q	G	C	H	U	O	R	Q
D	P	I	O	A	Y	N	N	Q	Z	R	W
Y	N	X	O	O	E	T	I	A	V	Q	D
K	J	K	E	P	W	O	L	W	H	Y	A
V	W	O	D	M	E	L	D	E	E	N	I
Z	U	J	N	C	O	C	B	T	F	S	R
E	J	O	G	D	X	X	K	I	V	Z	Y



# GALLERY 3

## Goldsmiths

# COLOUR

Artists use colour to express the **mood or feeling** of a piece.

Find the artworks on this page and stand in front of them.

Talk to a friend or guardian about how the colours make you feel then answer the questions on this page.



1. What feelings does the colour red suggest?

Circle the words below

Anger / Happiness / Danger / Sadness

1. Which colours create the feeling 'calm'?

Pink / Blue / Green / Yellow / Black

2. What is the effect of using lots of different bright colours in a piece of art?

\_\_\_\_\_

# GALLERY 4

Camberwell

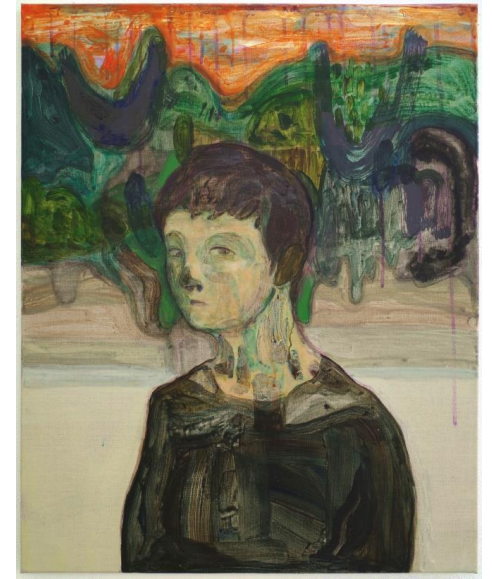
## PORTRAITS



There are lots of examples of portraiture in this gallery.

In a portrait, the artist represents the person's mood or personality through colour and other objects in the picture.

Can you draw yourself or a friend in the empty frame?



# LARGE SCALE ART GALLERY- FIRST FLOOR

This gallery is full of lots of large sculptures

**Choose your favourite and stand in front of it.**



Try looking at the sculpture straight on, then from different angles:

*Do not touch and be careful not to lean on the art!*

- Walk around it if you can do so safely
- Stand on your tiptoes
- Crouch on the floor
- Move closer to focus on one small section

Does it change from these different angles?

**After viewing the sculpture from the different perspectives think about the following questions.** You can discuss them with a friend or guardian, or write some notes on this page.

**Which descriptive word best fits the sculpture? Why?**

*BEAUTIFUL   DISGUSTING   FUNNY   INTRUIGING*

**What does the sculpture remind you of?**

*A real object or living thing? A feeling?*

**What materials has the artist used for this sculpture?**

# GALLERIES 5 + 6

Royal College of Arts

shiny

smooth

hard

soft

rough

## MATERIALS

HOW MANY DIFFERENT  
MATERIALS CAN YOU  
FIND IN THIS GALLERY?

WRITE THEM HERE



---

---

---

---

---

---

---

---

**Ask a friend or guardian what they think of the different materials!**



# GALLERY 7

## Central Saint Martins

# ABSTRACT ART

Can You Find These  
Pieces?



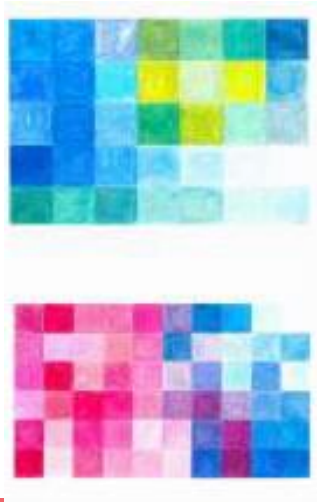
1.



2.



3.



Abstract art is art that does not look like any object or living thing from the real world around us. It uses colours, lines and shapes to express feelings.

The examples in this gallery are all very different.

What techniques and materials do you think each artist has used?

1.

2.

3.



Can you quickly sketch an abstract drawing using your pencil? Remember abstract art does not try to look like something real!



# GALLERY 8

## Kingston School of Art

# INTERPRETATION

When you view art you always 'interpret' it by noticing certain aspects, and relating it to your own life.

Quickly sketch your favourite painting or photo or sculpture from this gallery in the top box.

Can you think of why you liked this piece of art? Write this in the second box!

Think about what was fun to draw and what you noticed first when you saw the art.

*Hint: return to the 'other ways to say' table at the start of this pack*



# CONGRATULATIONS! YOU HAVE REACHED THE END OF THIS ACTIVITY TRAIL



Hope you enjoyed looking at all the artwork –  
Why not draw a picture of your own inspired artwork or write  
some words to describe your adventure!?

Ask your teacher, parent or guardian to send us a picture of  
your drawings in this activity pack to our Instagram account  
[@saatchigallery\\_learning](https://www.instagram.com/saatchigallery_learning) or email it to  
[education@saatchigallery.com](mailto:education@saatchigallery.com) with your first name and  
age to be featured on our Instagram account!