

# EVENTS AT SAATCHI GALLERY

DUKE OF YORK'S HQ, KING'S ROAD, LONDON, SW3 4RY

---



# ABOUT

Saatchi Gallery exists as a registered charity to provide an innovative and accessible platform for contemporary art and culture. We proudly offer free entry to school, university & community groups, made possible by event hires & Gallery partnerships.

Situated on King's Road in Chelsea, our Grade II listed building boasts 13 spacious galleries, all providing the perfect canvas for your unique event. Our galleries are fully accessible, have three-phase power, wifi, dimmable barrisol lighting and high ceilings.

Available year-round, Saatchi Gallery offers blank canvas spaces, as well as the opportunity to host your event within one of our major exhibitions. From product launches, to dinners and evening receptions, the opportunities for events at Saatchi Gallery are endless.

By having your event at Saatchi Gallery, you are supporting our charitable mission to keep art and culture open and accessible to all.







*Immersive Brand Event  
in Gallery 13*



*Weekend-long Brand Activation  
in Gallery 3*



*3 | Events at Saatchi Gallery*

*Wine Tasting  
in Gallery 7*



*Intimate Influencer Dinner & Product Reveal  
in Gallery 12. © Moriarty Events.*



*Branded & Floral Entrance Display*





**Charity Auction & Dinner  
in Gallery 13**



**Private dinner against the backdrop of  
a major exhibition, in Gallery 6**



**Fashion display  
in Gallery 10**



**Conference  
in Gallery 2**



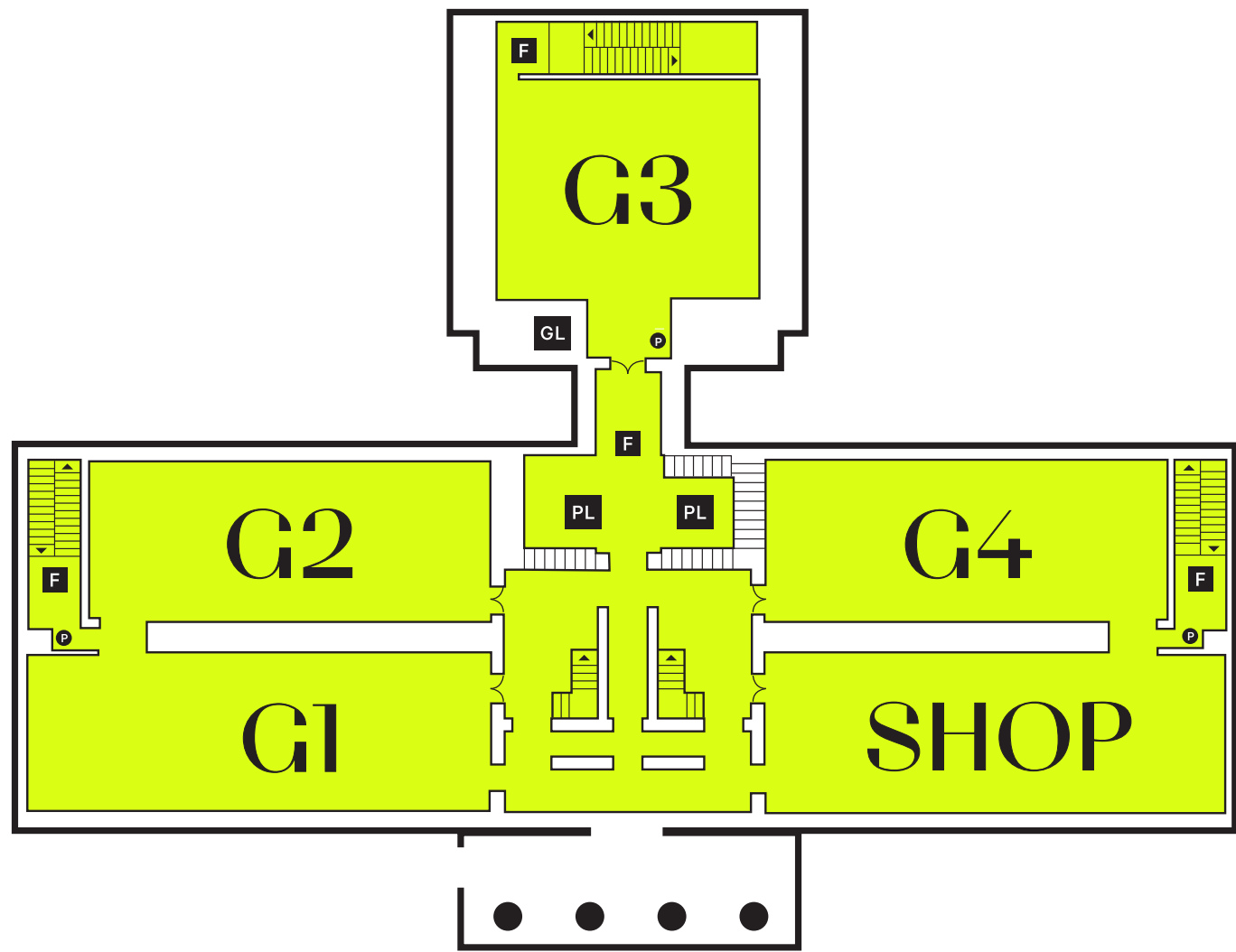
**Awards & Panel  
in Gallery 3**



**Drinks Reception & Party  
in Gallery 3**

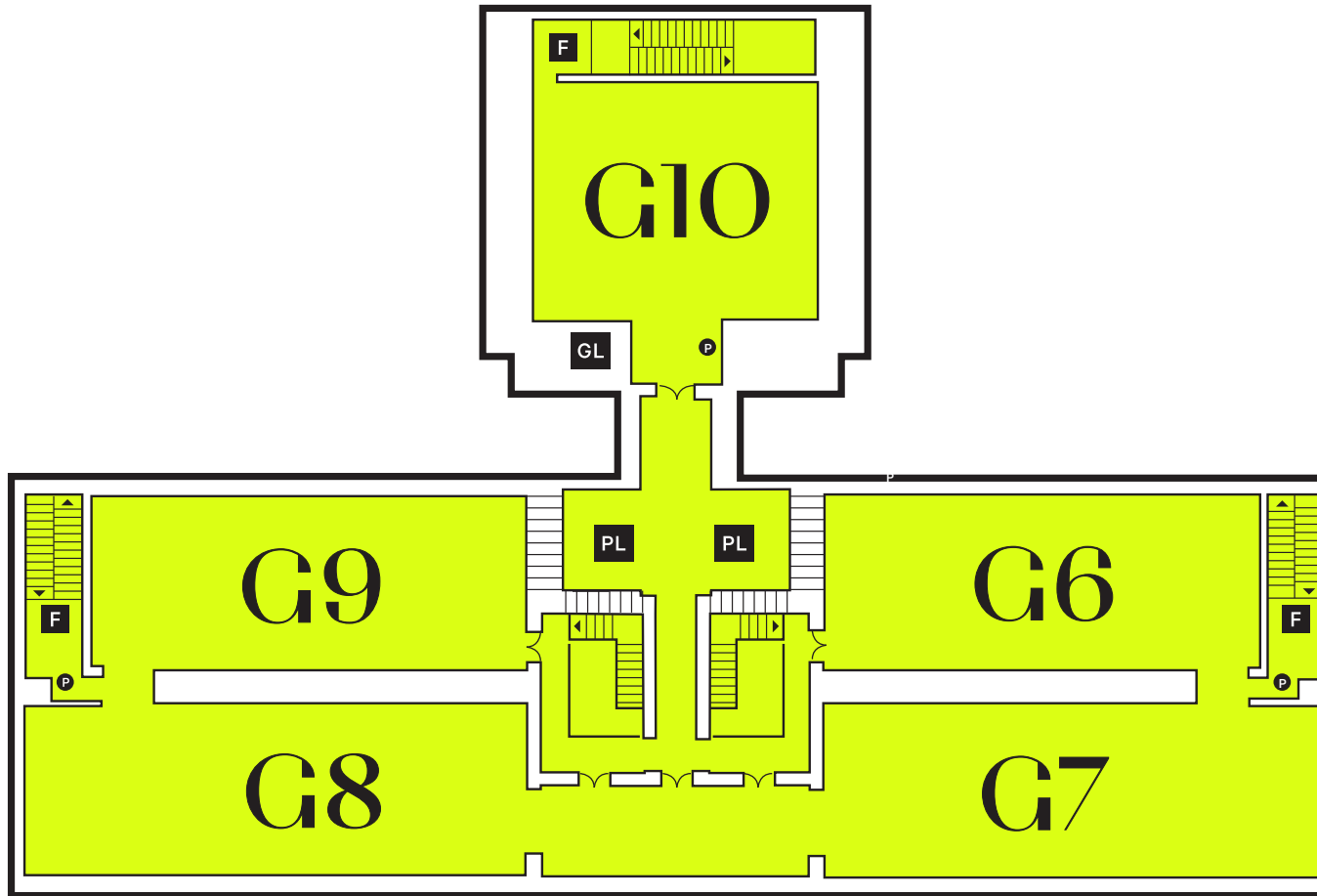


# GROUND FLOOR



Gallery 1	23.9 x 8.3 x 4.3 m
Reception	220
Seated dinner	160
Theatre	150
Gallery 2	21.0 x 8.3 x 4.3 m
Reception	220
Seated dinner	160
Theatre	150
Gallery 3	17.6 x 11.7 x 4.4 m
Reception	200
Seated dinner	150
Theatre	150
Gallery 4	21.0 x 8.3 x 4.3 m
Reception	220
Seated dinner	150
Theatre	150
Shop	23.9 x 8.3 x 4.3 m
Not available for hire	
Please note, all capacities are subject to blank canvas hire. and may be lower dependent on the exhibition in situ.	
F	Fire exit
PL	Passenger lift
P	Power supply 32 Amp 3 Phase
GL	Goods lift Dimensions available on request

# FIRST FLOOR



## Gallery 6 *21 x 8.3 x 4m*

Reception	220
Seated Dinner	160
Theatre	150

## Gallery 7 *24 x 8.3 x 4m*

Reception	220
Seated dinner	160
Theatre	150

## Gallery 8 *23.9 x 8.3 x 4m*

Reception	220
Seated dinner	160
Theatre	150

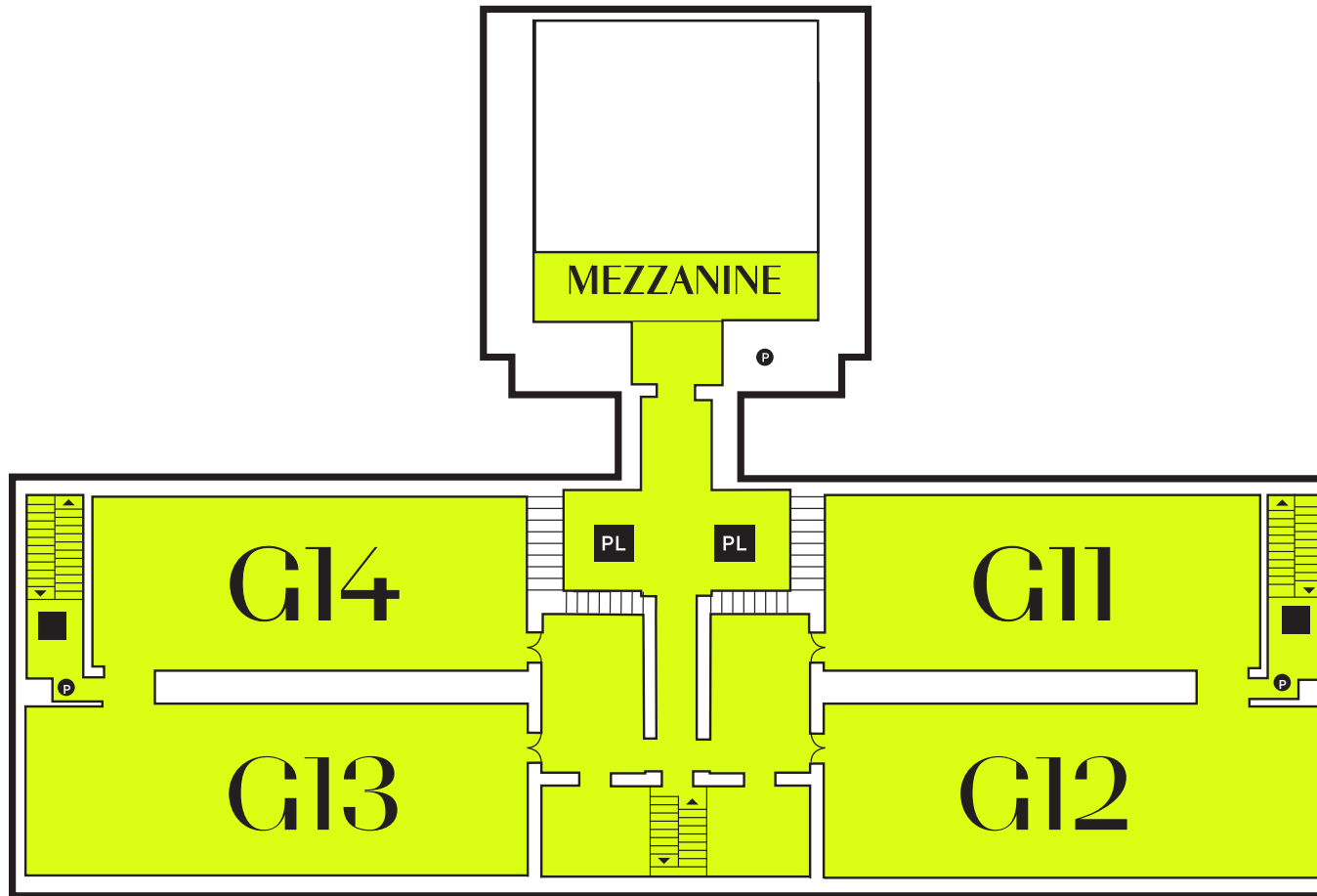
## Gallery 9 *21 x 8.3 x 4m*

Reception	220
Seated Dinner	160
Theatre	150

## Gallery 10 *13.8 x 11.7 x 7.2 m*

Reception	250
Seated dinner	170
Theatre	150

# SECOND FLOOR



**Gallery 11** *21 x 8.3 x 3.2m*

Reception	220
Seated dinner	160
Theatre	150

**Gallery 12** *24 x 8.3 x 3.2m*

Reception	220
Seated dinner	160
Theatre	150

**Gallery 13** *24 x 8.3 x 3.2m*

Reception	220
Seated dinner	160
Theatre	150

**Gallery 14** *21 x 8.3 x 4m*

Reception	220
Seated Dinner	160
Theatre	150

# APPROVED SUPPLIERS

We ask that you work exclusively with these suppliers for your event. All our suppliers are familiar with the venue and accredited to work at Saatchi Gallery.

## CATERERS

---

### Alexander and Bjorck

Annie Holden  
parties@alexanderandbjorck.com  
020 3457 1700  
[www.alexanderandbjorck.com](http://www.alexanderandbjorck.com)

### Bubble Food

Lucy Scarlett  
lucy@bubblefood.com  
020 7703 2653  
[www.bubblefood.com](http://www.bubblefood.com)

### By Word of Mouth

Chloe Goreham  
events@bywordofmouth.co.uk  
020 8871 9566  
[www.bywordofmouth.co.uk](http://www.bywordofmouth.co.uk)

### Dinner Ladies

Lily Cai  
lily@dinnerladiesltd.com  
07837 358 921  
[www.dinnerladiesltd.com](http://www.dinnerladiesltd.com)

### Host Hospitality

Anastasia Sewell  
anastasia@hosthospitality.co.uk  
07543 821 718  
[www.hosthospitality.co.uk](http://www.hosthospitality.co.uk)

### Jimmy Garcia Catering

Jo Furber  
jo.furber@jimmygarciacatering.com  
020 7998 3676  
[www.jimmygarciacatering.com](http://www.jimmygarciacatering.com)

### Lettice Events

Steph Gale  
events@letticeevents.com  
020 7820 1161  
[www.letticeevents.com](http://www.letticeevents.com)

### Social Pantry

Kristy Robinson  
kristy@socialpantry.co.uk  
020 8871 1949  
[www.socialpantry.co.uk](http://www.socialpantry.co.uk)

## DRINKS ONLY

---

### Mix & Match

Paul Keighley  
paul@mixandmatchltd.co.uk  
07784 517 674  
[www.mixandmatchltd.co.uk](http://www.mixandmatchltd.co.uk)

### Sip Social

Richard Maxted  
richard@sipsocial.co.uk  
07815 601 758  
[www.sipsocial.co.uk](http://www.sipsocial.co.uk)

## AV

---

### DCLX

Alex Girdwood  
alex.girdwood@dclx.co.uk  
07782 277 956  
[www.dclx.co.uk](http://www.dclx.co.uk)

### Delta Live

Sarah Brundell  
sarah.brundell@deltalive.com  
020 8339 3800  
[www.deltalive.com](http://www.deltalive.com)

### White Light

Joshua Wray  
venues@whitelight.ltd.uk  
020 8254 4800  
[www.whitelight.ltd.uk](http://www.whitelight.ltd.uk)

## PRODUCTION

---

### Bespoke

Megan Bourne  
megan@bespoke-london.co.uk  
020 8961 1510  
[www.bespoke-london.co.uk](http://www.bespoke-london.co.uk)

### Event Concept

Kelly Brewer  
kelly.brewer@eventconcept.co.uk  
020 7064 3553  
[www.eventconcept.co.uk](http://www.eventconcept.co.uk)

### Wise Productions

Abby Sammons  
events@wiseproductions.co.uk  
020 8991 6922  
[www.wiseproductions.co.uk](http://www.wiseproductions.co.uk)

## FLORISTS

---

### Lavender Green

Rhiannon Peach  
rhiannon@lavendergreen.co.uk  
020 7127 5303  
[www.lavendergreen.co.uk](http://www.lavendergreen.co.uk)

### Lucy Vail

Autumn Withey-Stevens  
autumn@lucyvailfloristry.co.uk  
020 3325 4376  
[www.lucyvailfloristry.com](http://www.lucyvailfloristry.com)

### Mary Jane Vaughan Designs

Anna Donner  
anna@maryjanevaughan.co.uk  
020 7385 8400  
[www.maryjanevaughan.co.uk](http://www.maryjanevaughan.co.uk)

### Sage

Maria Agius  
maria@sageflowers.co.uk  
07464 591 576  
[www.sageflowers.co.uk](http://www.sageflowers.co.uk)

### Sisters of Bloom

Clare Marie Jones  
clare@claremariejones.com  
07968 944 842  
[www.sistersofbloom.co.uk](http://www.sistersofbloom.co.uk)

### Pinstripes & Peonies

Rachel de Woolfson  
rachel@pinstripesandpeonies.com  
020 7720 1245  
[www.pinstripesandpeonies.com](http://www.pinstripesandpeonies.com)

## FURNITURE

---

### Furniture on the Move

Adam Male  
adam@furnitureonthemove.co.uk  
0117 325 9695  
[www.furnitureonthemove.co.uk](http://www.furnitureonthemove.co.uk)

### Options Great Hire

Tabitha Allen  
tabitha.allen@options-greathire.co.uk  
020 3609 0609  
[www.options-greathire.co.uk](http://www.options-greathire.co.uk)

### Hire It

Hannah Jackson  
hannah@hireit-eventfurniture.com  
020 3983 6773  
[www.hireit-eventfurniture.com](http://www.hireit-eventfurniture.com)

## ENTERTAINMENT

---

### Euphonica

Dan Savidge  
hello@euphonica.com  
020 3397 9018  
[www.euphonica.com](http://www.euphonica.com)

### Prelude Entertainment

Rodney Prout  
rodney@preludeentertainment.co.uk  
020 8660 6647  
[www.preludeentertainment.co.uk](http://www.preludeentertainment.co.uk)



# APPROVED SUPPLIERS

## GRAPHICS & VINYL

---

### Eye For Detail

Leo Rodriguez  
info@eyefordetailinstalls.com  
07814 454 482  
[www.eyefordetailinstalls.com](http://www.eyefordetailinstalls.com)

### FicklestiX

Marko Knowles  
marko@ficklestix.com  
020 3375 4721  
[www.ficklestix.com](http://www.ficklestix.com)

## WALLING & DRAPING

---

### Aubury & Associates (Walling)

Gideon Moss  
gideon@auburys.com  
07966 313 234  
[www.auburys.com](http://www.auburys.com)

### Blackout Ltd. (Draping)

Chris Brain  
chrisb@blackout.co.uk  
020 8687 8400  
[www.blackout.co.uk](http://www.blackout.co.uk)

## RIGGING

---

### Outback Rigging

Stuart Cooper  
stuart@outbackrigging.com  
020 8993 0066  
[www.outbackrigging.com](http://www.outbackrigging.com)

## CHAMPAGNE PARTNER

---

### Champagne Telmont

Courtney Dinsdale  
courtney.dinsdale@remy-cointreau.com  
07823 350 952  
[www.champagne-telmont.com](http://www.champagne-telmont.com)

## HOTEL PARTNER

---

### 11 Cadogan Gardens

Tatiana Stacke  
tatiana@11cadogangardens.com  
07903 335 159  
[www.11cadogangardens.com](http://www.11cadogangardens.com)

## SECURITY

---

### CLV Security

Lorenzo Chame  
bookings@clvsecurityservices.co.uk  
07449 911 795  
[www.clvsecurityservices.co.uk](http://www.clvsecurityservices.co.uk)

### Gallowglass

Nick Kostov  
NickK@galsec.co.uk  
07730 096 455  
[www.gallowglasssecurity.com](http://www.gallowglasssecurity.com)

## POWER

---

### Gekko

Rab Fernandez  
rab@gekko-ps.co.uk  
07951 579 730  
[www.gekko-ps.co.uk](http://www.gekko-ps.co.uk)

## CLEANING

---

### NuKleen

Nicole Jeffries  
sales@nukleen.com  
020 8594 0800  
[www.nukleen.com](http://www.nukleen.com)

# FREQUENTLY ASKED QUESTIONS

## **What are the hire charges?**

Hire of one Gallery for an evening starts at £8,000 +VAT. Please contact the events team for a bespoke quote based on your requirements.

## **How many Galleries can I hire?**

We offer single Gallery, multiple Gallery, full floor (4 galleries) and entire Gallery hire, throughout the year.

## **What is included in my hire?**

Hire includes exclusive use of your hired Galleries, as well as a dedicated Event Manager to offer support throughout the planning and execution of your event. Hire times include set up and dismantle periods.

## **Can I work with suppliers not on your approved supplier list?**

Unfortunately not. Due to the nature of the venue, we ask that you work exclusively with the suppliers on our list.

## **What restrictions are there in the Gallery?**

Surprisingly few! We ask that at the end of your hire period, you return the Gallery in its original condition.

## **Are there any additional fixed costs to be aware of?**

As a dry hire venue, there are a few additional costs to consider as part of your hire. These include security and cleaning, both of which are mandatory.

## **Can I host my event within Saatchi Gallery's major exhibition?**

Yes! From private tours to dinner and drinks receptions, there are many ways you can incorporate Saatchi Gallery's exhibitions into your event.

## **Can I hire the Gallery for a long period?**

Subject to Gallery approval, the Gallery is available for exhibition hire, brand activations or large scale fairs. Please get in touch for further information.

# CONTACT

---

For further details and information on rates, please email or call us on:

**+44 (0) 20 7811 3089 | [events@saatchigallery.com](mailto:events@saatchigallery.com)**